

Installation Instructions for geneGIS 0.2

(genegis.org)

1. Software requirements

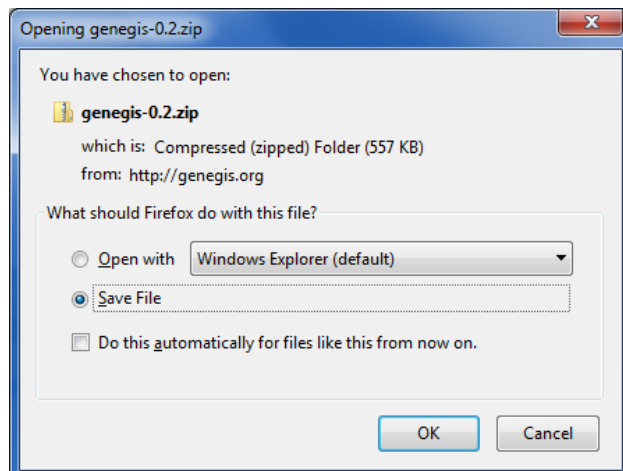
- ArcGIS for Desktop Version 10.1 or 10.2
 - A free 60-day trial is available from:
<http://www.esri.com/software/arcgis/arcgis-for-desktop/free-trial>
 - NOTE: If you have an earlier version of ArcGIS for Desktop installed (e.g. 9.3 or 10.0) you must completely uninstall it before installing 10.1 or 10.2
 - NOTE: ArcGIS runs solely on Windows operating systems. If you want to run ArcGIS on a Macintosh operating system, you must first set up your computer to run Windows OS via a Windows emulation software program (e.g. Apple's [Boot Camp](#), Oracle's [VirtualBox](#), or VMware [Fusion](#)).
- If using ArcGIS 10.1, you will also need the ArcGIS 10.1 SP1 for Desktop
 - Available from <http://tinyurl.com/esripatches>
 - Under ArcGIS 10.1 SP1 Setups, select:
Product: ArcGIS 10.1 SP1 for Desktop **Setup:** ArcGIS 10.1 for Desktop
 - Follow the installation instructions.
 - If you are unsure whether or not you already have the Service Pack (or which Service Pack) you have installed, use the PatchFinder, located near the bottom of the webpage:
[PatchFinder for Windows](#)

2. Go to the geneGIS installation webpage, <http://genegis.org/install.html>

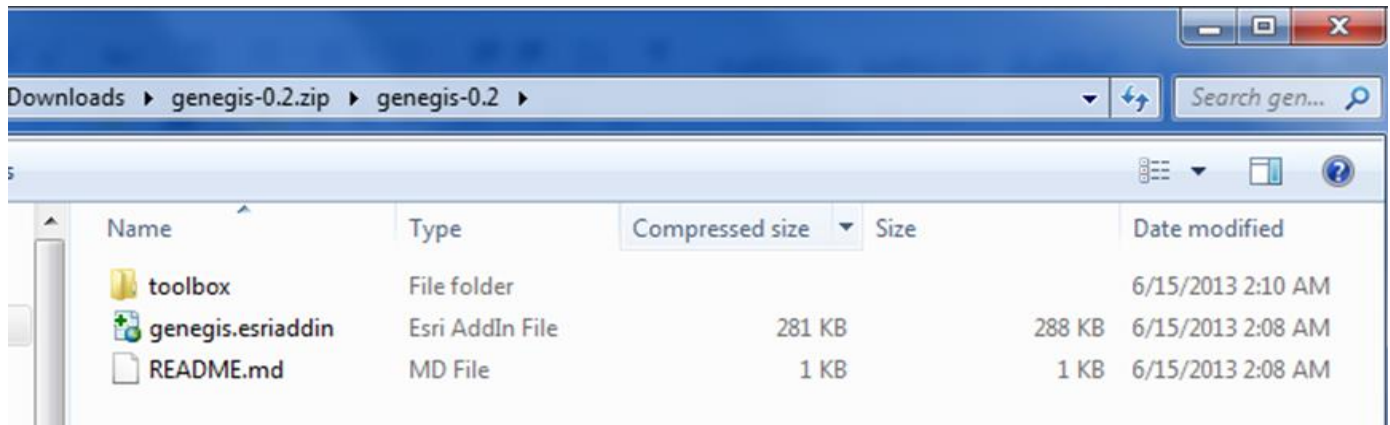
- Click on the green installation button



- When the Dialog Box opens, choose Save File and click OK.

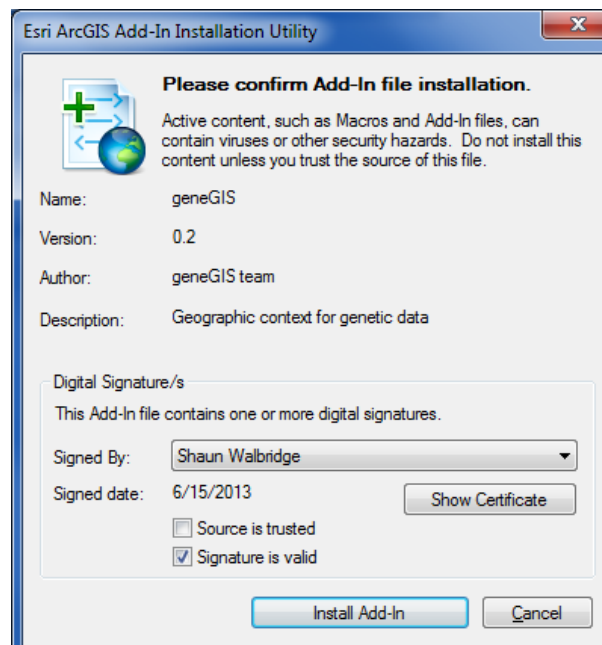


3. When the file is finished downloading, unzip *genegis-0.2.zip*. You will see the following files:

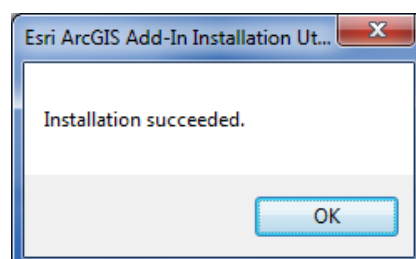


- Toolbox/ – directory containing the geoprocessing Python scripts and xml file for *geneGIS*
- *genegis.esriaddin* – the add-in file used to install *geneGIS*
- README.md – a brief outline of *geneGIS*

4. Double click on the *genegis.esriaddin* file and click on the Install Add-In button when the Esri ArcGIS Add-In Installation Utility dialog box appears:

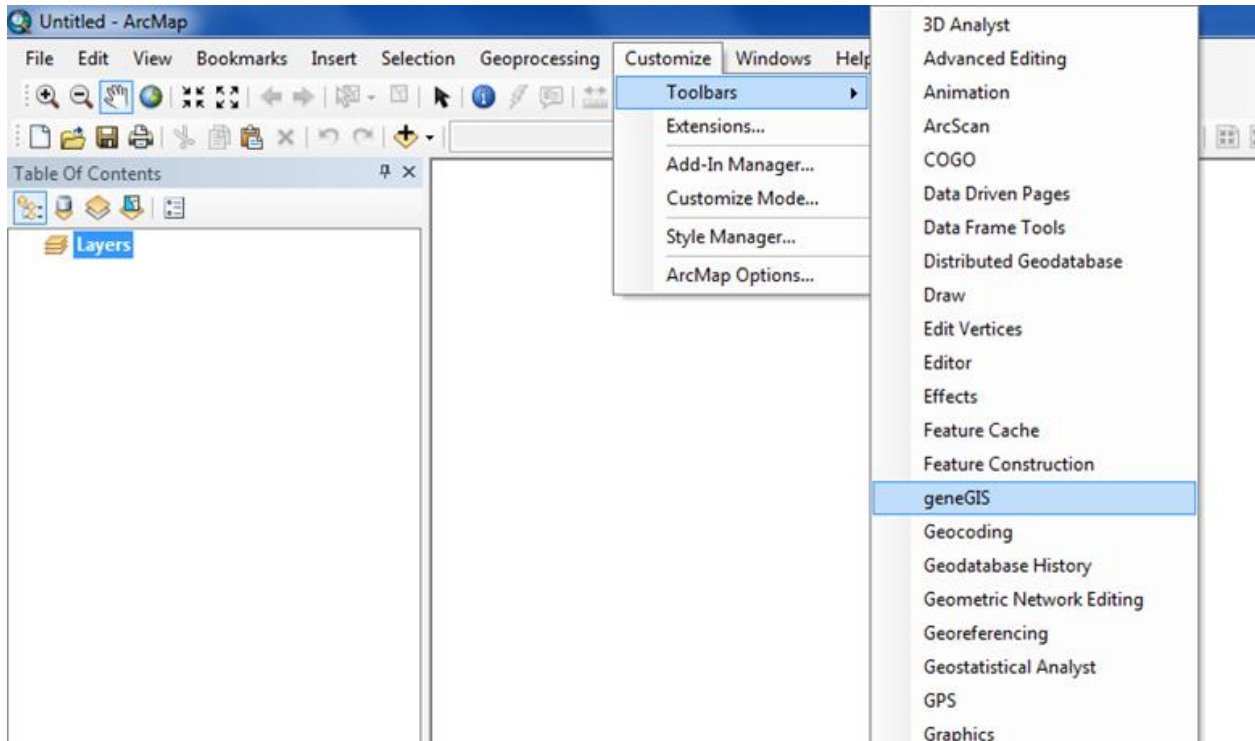


5. Once *geneGIS* is installed you will see:



Click OK.

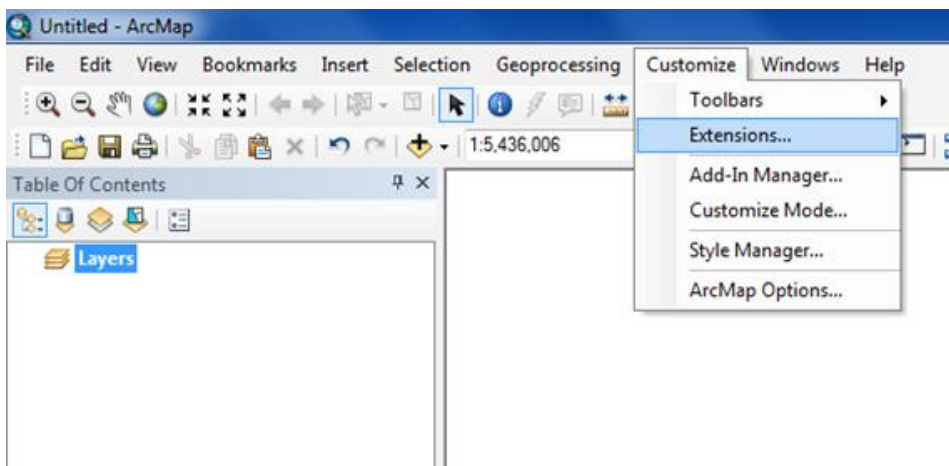
- Open ArcMap. The geneGIS toolbar should appear. If it does not, on the main menu select:
Customize → Toolbars → geneGIS



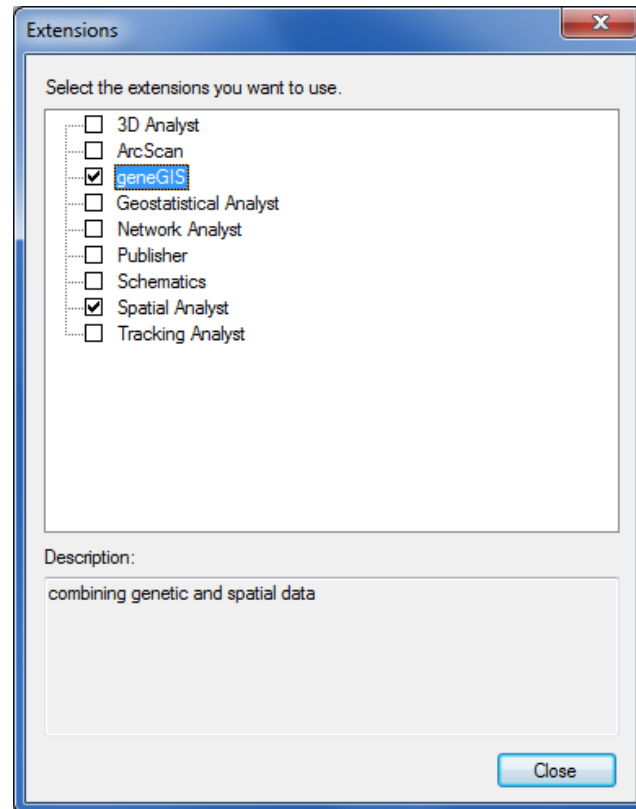
- The geneGIS toolbar should now appear.



- Finally, return the main menu and select:
Customize → Extensions ...



9. In the Extensions dialog box, make sure that there is a check mark next to *geneGIS* and Spatial Analyst and then click on Close



10. Congratulations, you are ready to use *geneGIS*!